

Designation of Evacuation Sites and Stayed-in Areas for Fires Caused by an Earthquake in Tokyo Wards

FY2022
Version

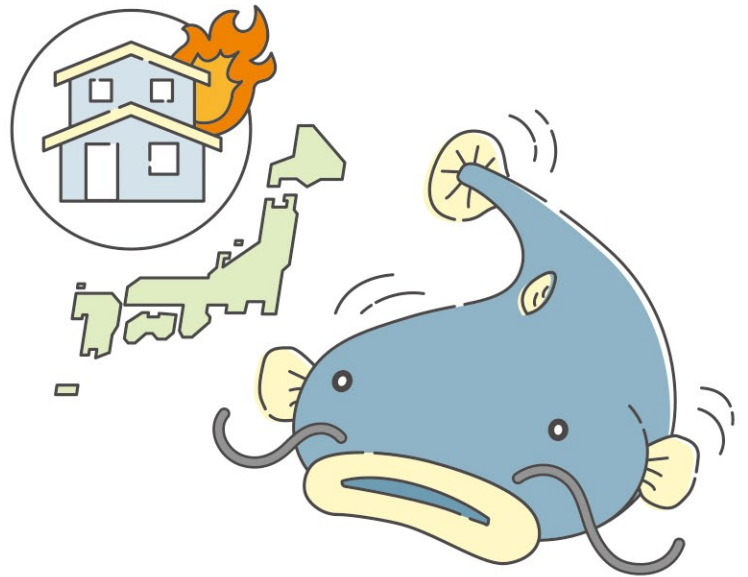


Bureau of Urban Development
Tokyo Metropolitan Government

01 Do you know where the evacuation sites are in the area you live?

Japan has more earthquakes than most other countries, accounting for roughly 10% of all earthquakes worldwide. If a large earthquake occurs causing a fire that spreads, do you know where to evacuate to?

To evacuate safely, it is important to be sufficiently prepared and take action in advance. Therefore, check evacuation sites and the evacuation process on the pamphlet with your neighbors.



02 Designation of Evacuation Sites

The Tokyo Metropolitan Government, in accordance with the Tokyo Metropolitan Ordinance on Earthquake Countermeasures, designates evacuation sites over a wide area in the ward in order to safely protect Tokyo residents from fires that may spread after an earthquake.

Designated sites are revised about every five years with consideration given to changes in urban conditions and population, and this is the ninth revision. While listening to the latest information and observations from disaster prevention experts, the participants discussed evacuation sites and other issues.

History of Designation

July 1972	Designation as per the Ordinance	(120 Evacuation Sites, 1 Stayed-in Area, 307 kilometers of Evacuation Roads)
April 1979	1st Designation	(132 Evacuation Sites, 2 Stayed-in Areas, 285 kilometers of Evacuation Roads)
April 1985	2nd Designation	(135 Evacuation Sites, 2 Stayed-in Areas, 241 kilometers of Evacuation Roads)
May 1992	3rd Designation	(146 Evacuation Sites, 2 Stayed-in Areas, 181 kilometers of Evacuation Roads)
March 1998	4th Designation	(167 Evacuation Sites, 5 Stayed-in Areas, 124 kilometers of Evacuation Roads)
December 2002	5th Designation	(170 Evacuation Sites, 18 Stayed-in Areas, 102 kilometers of Evacuation Roads)
February 2008	6th Designation	(189 Evacuation Sites, 33 Stayed-in Areas, 78 kilometers of Evacuation Roads)
May 2013	7th Designation	(197 Evacuation Sites, 34 Stayed-in Areas, 54 kilometers of Evacuation Roads)
June 2018	8th Designation	(213 Evacuation Sites, 37 Stayed-in Areas, 54 kilometers of Evacuation Roads)
July 2022	9th Designation	(221 Evacuation Sites, 40 Stayed-in Areas, 49 kilometers of Evacuation Roads)

* The ninth designation is effective from September 1, 2022.

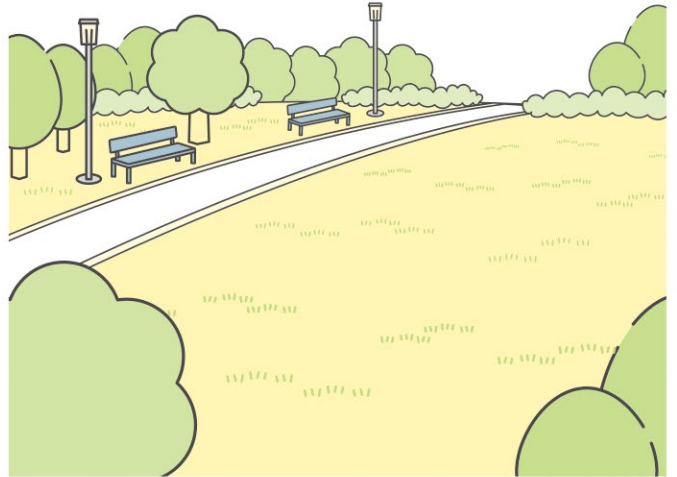
03 Definition of Terms

Evacuation Site

This is an area for residents to shelter until a large fire is extinguished. Open spaces, such as parks, green spaces, residential complexes, schools, and so on that have the area necessary to protect the lives of evacuees are to be used, and in principle, the inside of buildings are not to be used.

[Main Requirements]

- Roughly 5 ha or greater in area

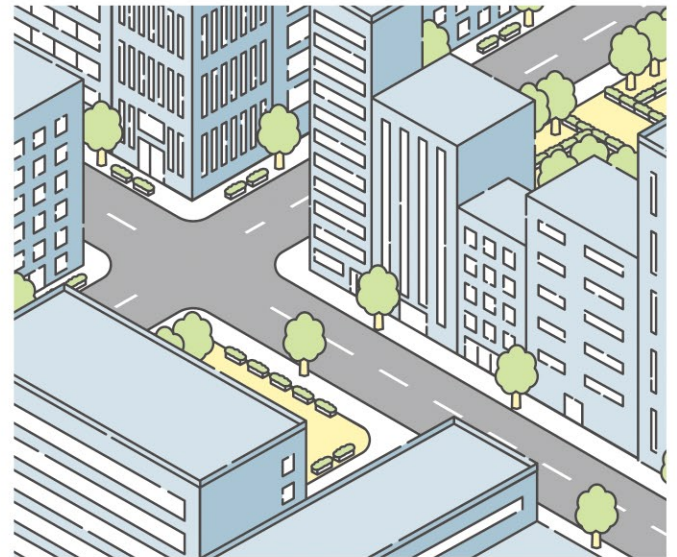


Stayed-in Area

Fireproofing is at an advanced stage in the area, so that even if a fire occurs, there is no danger of a large fire in the area and no need for extensive evacuation. These areas are in areas where evacuation sites are not assigned to these areas.

[Main Requirements]

- Roughly 65 ha or greater in area
- A building with a fire resistance ratio of 70% or higher
- A building with a fire danger rank of 3 or lower



Evacuation Road

These roads are designated in areas that are at high risk from a fire for citizens to safely evacuate to evacuation sites and in areas that make it necessary for them to evacuate to distant evacuation sites.



Area Allocation

Each area in which a resident lives or works defines which evacuation site that resident should evacuate to, taking into account the size of the evacuation site, number of people evacuating, distance, and other factors. In principle, the decision is made in consultation with the wards so that the areas are township-based.



04 Evacuation Process



There is the danger of fire and one cannot get to the temporary meeting place



There is the danger of fire.
There are evacuation orders

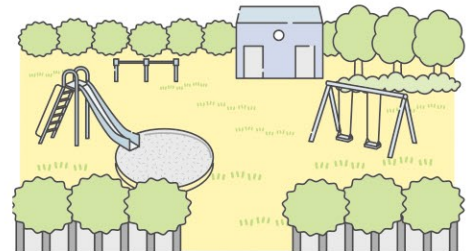


People in the stayed-in area are waiting in the area

Fire and evacuation orders

Temporary meeting place
such as elementary and junior high schools,
and neighborhood parks

There is the danger of fire and the temporary meeting place is dangerous

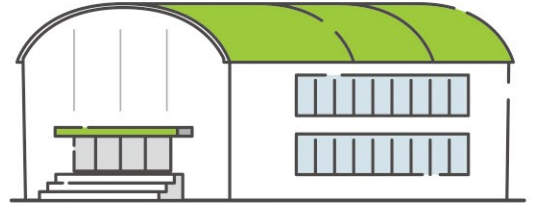


There is no danger of fire and a temporary meeting place is safe.

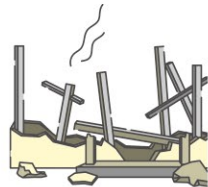


Temporary meeting place : A place where people temporarily gather to check on each other before evacuating to an evacuation site.

Shelter : These places are for victims who cannot continue to live in their homes to evacuate to. They are different to evacuation sites, which are for waiting until fires have been distinguished.



Evacuation sites
designated
by area allocation



Waiting at a temporary meeting place

Stayed-in Areas



The danger of fire has passed

There is damage to one's home and it is unlivable.



Shelters
such as elementary
and junior high schools



There is no damage to one's home.

Home



05

Map of Designated Evacuation Sites and Stayed-in Areas (The ninth designation)



- Evacuation Site
- Stayed-in Area
- Evacuation Road
- Area Allocation
- City world
- Town chome world
- Road
- Main railroad

0 2.5 5 10km



Q1 How will I be guided to the evacuation site?

A1 The guiding of residents to evacuation sites is performed on a ward-by-ward basis. The way residents are guided may differ from ward to ward. For further details, please contact your ward officials.

Q2 Can I evacuate to any site?

A2 In principle, you should evacuate to an evacuation site designated in the area allocation. However, follow guidance from your ward as you may have to evacuate elsewhere depending on the spread of fire after an earthquake.

Q3 What is the difference between this designation revision and the previous revision?

A3 Nine new evacuation sites were designated with the consent of landowners, bringing the total number of evacuation sites to 221. Moreover, due to further redevelopment, three additional areas were added to the area's stayed-in areas, bringing the total to 40 areas and approximately 11,500 hectares. Additionally, due to improvements that decrease dangers from fires, the length of evacuation roads has been reduced to 13 systems and 49 km.

Q4 What is the situation with evacuation sites in the Tama area?

A4 Every municipality designates evacuation sites and roads in line with current regional conditions in the Tama area. Please contact your municipality directly.



Where to call in your ward? (July 2022 at present)

Where to call with inquiries regarding evacuation sites and stayed-in areas for each ward is shown below.

Ward	Division / Section	Phone number
Chiyoda	Policy Administration Department / Disaster Countermeasures and Crisis Management Section	03-5211-4187
Chuo	Administrative Division / Disaster Prevention Section	03-3546-5287
Minato	Disaster Prevention and Crisis Management Office / Disaster Prevention Section	03-3578-2541
Shinjuku	Crisis Management Department / Crisis Management Section	03-5273-4592
Bunkyo	Administrative Division / Disaster Prevention Section	03-5803-1744
Taito	Crisis Management Office / Crisis and Disaster Countermeasures Section	03-5246-1092
Sumida	Urban Planning Department / Crisis Management and Disaster Prevention Section	03-5608-6206
Koto	Crisis Management Office of Administrative Division / Disaster Prevention Section	03-3647-9584
Shinagawa	Disaster Management Department / Disaster Prevention Section	03-5742-6941
Meguro	Crisis Management Department / Disaster Prevention Section	03-5723-8176
Ota	General Affairs Division / Disaster Prevention and Crisis Management Section	03-5744-1236
Setagaya	Crisis Management Department / Disaster Countermeasures Division	03-5432-2262
Shibuya	Crisis Management and Countermeasures Department / Disaster Prevention Section	03-3463-4475
Nakano	General Affairs Division / Disaster Prevention and Crisis Management Section	03-3228-5435
Suginami	Crisis Management Office / Disaster Prevention Section	03-5307-0703
Toshima	General Affairs Division / Disaster Prevention and Crisis Management Section	03-3981-2100
Kita	Crisis Management Office / Disaster Prevention and Crisis Management Section	03-3908-8184
Arakawa	Civic Life Affairs Division / Disaster Prevention Section	03-3803-8711
Itabashi	Crisis Management Department / Disaster Prevention and Crisis Management Section	03-3579-2159
Nerima	Crisis Management Office / Disaster Prevention Planning Section	03-5984-1327
Adachi	Crisis Management Department / Disaster Countermeasures Division	03-3880-5837
Katsushika	Regional Promotion Division / Crisis Management Section	03-5654-8572
Edogawa	Crisis Management Department / Disaster Prevention and Crisis Management Section	03-5662-1992

Tokyo Metropolitan Government (July 2022 at present)

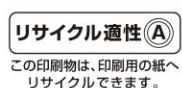
Bureau of Urban Development Urban Development Projects Division / Disaster Management Section 03-5320-5142

Designation of Evacuation Sites and Stayed-in Areas for Fires Caused by an Earthquake in Tokyo Wards FY2022 Version

Published in July 2022

Edited and Published by
Disaster Management Section ,Urban Development Projects Division,
Bureau of Urban Development,
Tokyo Metropolitan Government
2-8-1, Nishi-Shinjuku, Shinjuku-ku, Tokyo, 163-8801
Tel: 03-5320-5142 <https://www.toshiseibi.metro.tokyo.lg.jp/bosai/hinan/index.htm>

本パンフレットの地図は、東京都縮尺1/2,500地形図(令和3年度版)を使用して作成したものです(4都市基交第417号)。



登録番号 (3) 48

