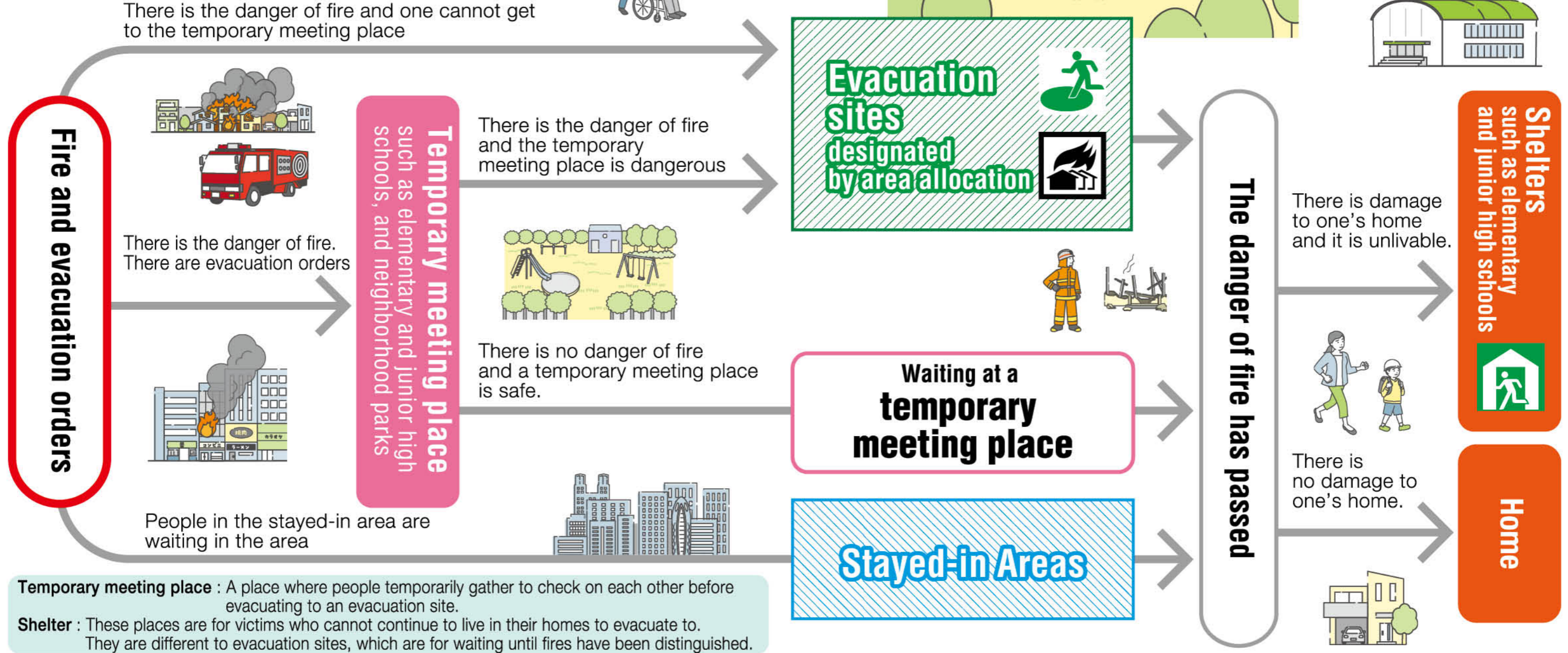


Designation of Evacuation Sites

The Tokyo Metropolitan Government, in accordance with the Tokyo Metropolitan Ordinance on Earthquake Countermeasures, designates evacuation sites over a wide area in the ward in order to safely protect Tokyo residents from fires that may spread after an earthquake about every five years.

Evacuation Process



Evacuation Site

This is an area for residents to shelter until a large fire is extinguished. Open spaces, such as parks, green spaces, residential complexes, schools, and so on that have the area necessary to protect the lives of evacuees are to be used, and in principle, the inside of buildings are not to be used.

Stayed-in Area

Fireproofing is at an advanced stage in the area, so that even if a fire occurs, there is no danger of a large fire in the area and no need for extensive evacuation. These areas are in areas where evacuation sites are not assigned to these areas.

Evacuation Road

These roads are designated in areas that are at high risk from a fire for citizens to safely evacuate to evacuation sites and in areas that make it necessary for them to evacuate to distant evacuation sites.

Area Allocation

Each area in which a resident lives or works defines which evacuation site that resident should evacuate to, taking into account the size of the evacuation site, number of people evacuating, distance, and other factors. In principle, the decision is made in consultation with the wards so that the areas are township-based.